



*Jordan fishwick*

10 Sandringham Court, Cavendish Mews,  
Guide Price £479,950

# Sandringham Court WILMSLOW

Guide Price £479,950




**\*\* NO ONWARD CHAIN \*\*** A spacious and well presented three bedroom first floor apartment, ideally located for Wilmslow town centre, Sainsbury's and Wilmslow train station. In brief, the accommodation comprises: Entrance hall with storage, large spacious living dining room with sliding doors, a well proportioned fitted kitchen, double bedroom with en-suite, further double bedroom, well proportioned third bedroom and a family bathroom. The property also benefits from a lift to all floors and its own garage. Wilmslow town centre offers a wide range of amenities, which include a number of local shopping facilities, bars and restaurants. Wilmslow train station offers a direct service to London Euston and Manchester City centre and the location caters for many different needs. The property is well placed for easy access to the M56 and A34 for commuters to Manchester and the North West commercial centres and Manchester Airport is less than 20 minutes away. Viewings essential to fully appreciate.



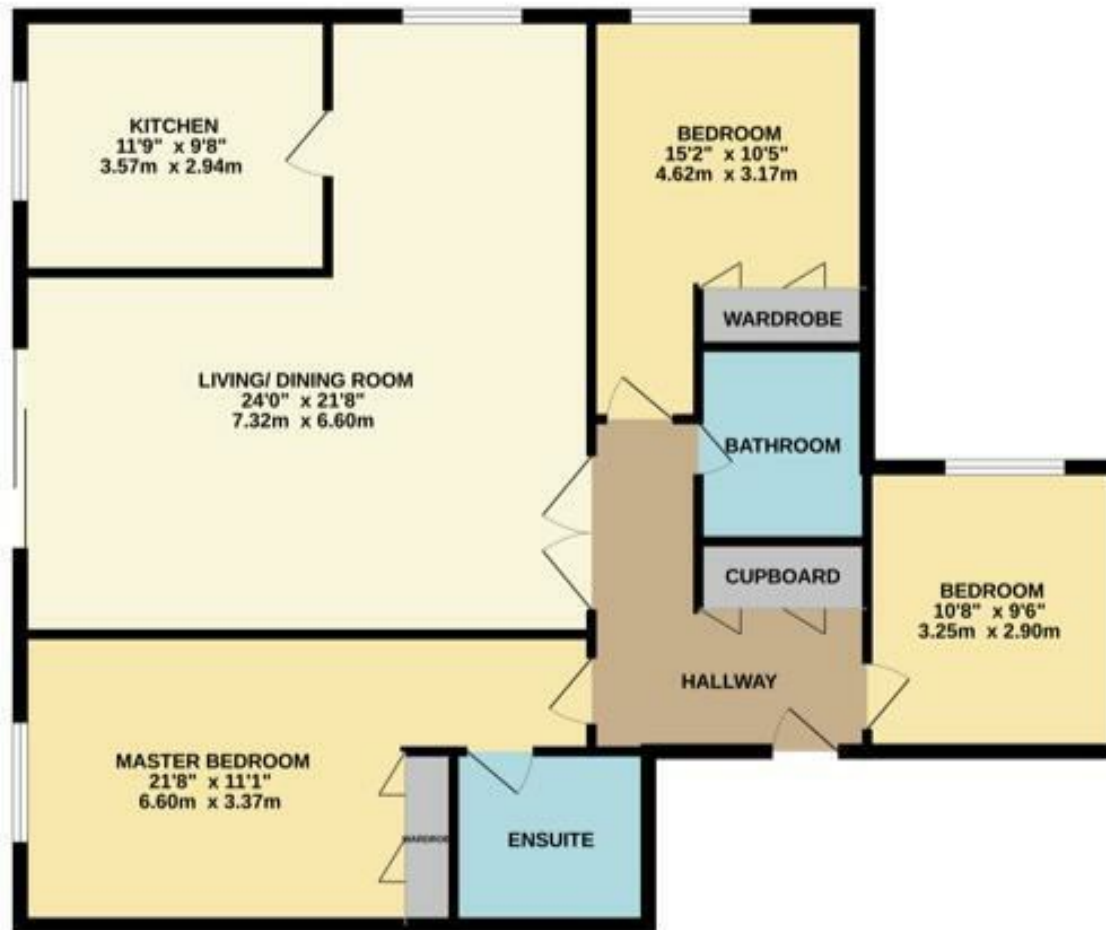


- First Floor Apartment
- Three Bedrooms
- Lift Access
- Easy access to Wilmslow train station
- Garage
- Stone's throw to Wilmslow town centre
- No Onward Chain



Energy Efficiency Rating		
	Current	Potential
Very energy efficient - lower running costs		
(92 plus) <b>A</b>		
(81-91) <b>B</b>		
(69-80) <b>C</b>	<b>77</b>	<b>80</b>
(55-68) <b>D</b>		
(39-54) <b>E</b>		
(21-38) <b>F</b>		
(1-20) <b>G</b>		
Not energy efficient - higher running costs		
<b>England &amp; Wales</b>	EU Directive 2002/91/EC 	





Measurements are approximate. Not to scale. Illustrative purposes only.  
Made with Heringa 12/2018



These particulars are believed to be accurate but they are not guaranteed and do not form a contract. Neither Jordan Fishwick nor the vendor or lessor accept any responsibility in respect of these particulars, which are not intended to be statements or representations of fact and any intending purchaser or lessee must satisfy himself by inspection or otherwise as to the correctness of each of the statements contained in these particulars. Any floorplans on this brochure are for illustrative purposes only and are not necessarily to scale.

Offices at: Chorlton, Didsbury, Disley, Hale, Glossop, Macclesfield, Manchester Deansgate, Manchester Whitworth Street, New Mills, Sale, Wilmslow and Withington

36-38 Alderley Road, Wilmslow SK91JX  
**01625 532000**

wilmslow@jordanfishwick.co.uk  
www.jordanfishwick.co.uk